

49 Blake Street NATHALIA, VIC



5



1

## GRAND, HISTORIC, 5 BEDROOMS

Features: Large, secure yard of approximately quarter acre, fully landscaped gardens, brick paving and deep verandahs, garden shed and original posty bike shed, Baltic Pine floor boards, crafted timber fireplaces, 13ft ceilings, instant hot water system, dishwasher. A must see home! A showpiece!

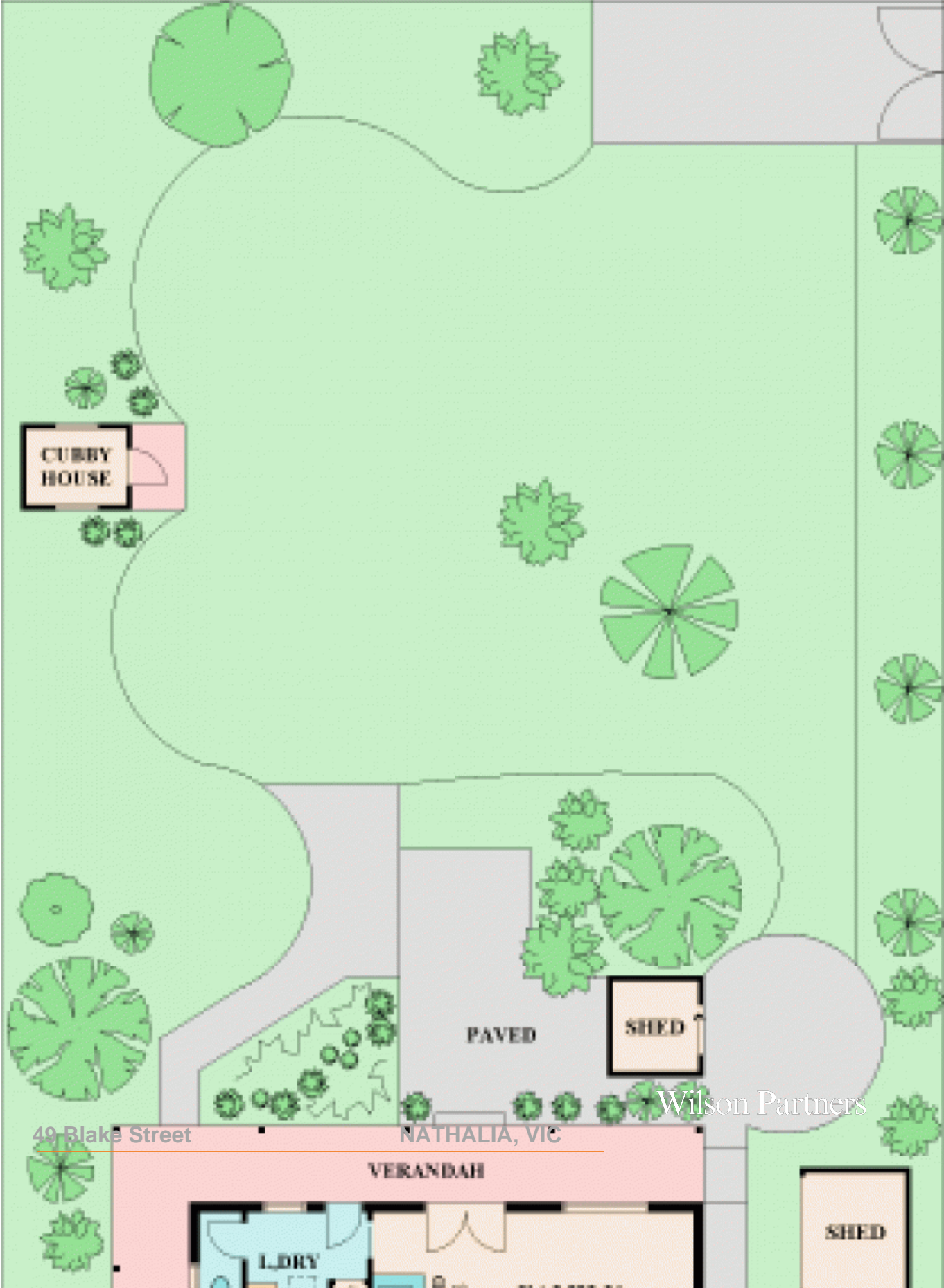
Location: Only 30 minutes from Shepparton, with every facility you could need, its the best of both worlds here. A charming town, Nathalia is full of character and well maintained with picturesque streets and parkland around the river banks - Yes! A river runs through it.

OFFERS WELCOME.

**Bianca Thomas**

0425 733 651

APPROX. SCALE (m)  
This plan is a sketch, and  
all data shown is general only.



49 Blake Street

NATHALIA, VIC

Wilson Partners

VERANDAH

L. DRY

SHED

SHED