



20 LINTON STREET CLONBINANE, VIC



3



1

YOU LITTLE CUTIE!

With a little love and attention this Little Cutie will shine once again. A neat 3 bedroom brick veneer home offers a large living area open to a basic kitchen and boasts one bathroom with shower over bath. Positioned on approx 850m² with concrete driveway and slab ready for a shed as well as extra under house storage, there is plenty of useable space to meet your needs. Waterford Park is located a few kilometres from the Clonbinane exit on the Hume Freeway just to the north of Wandong.

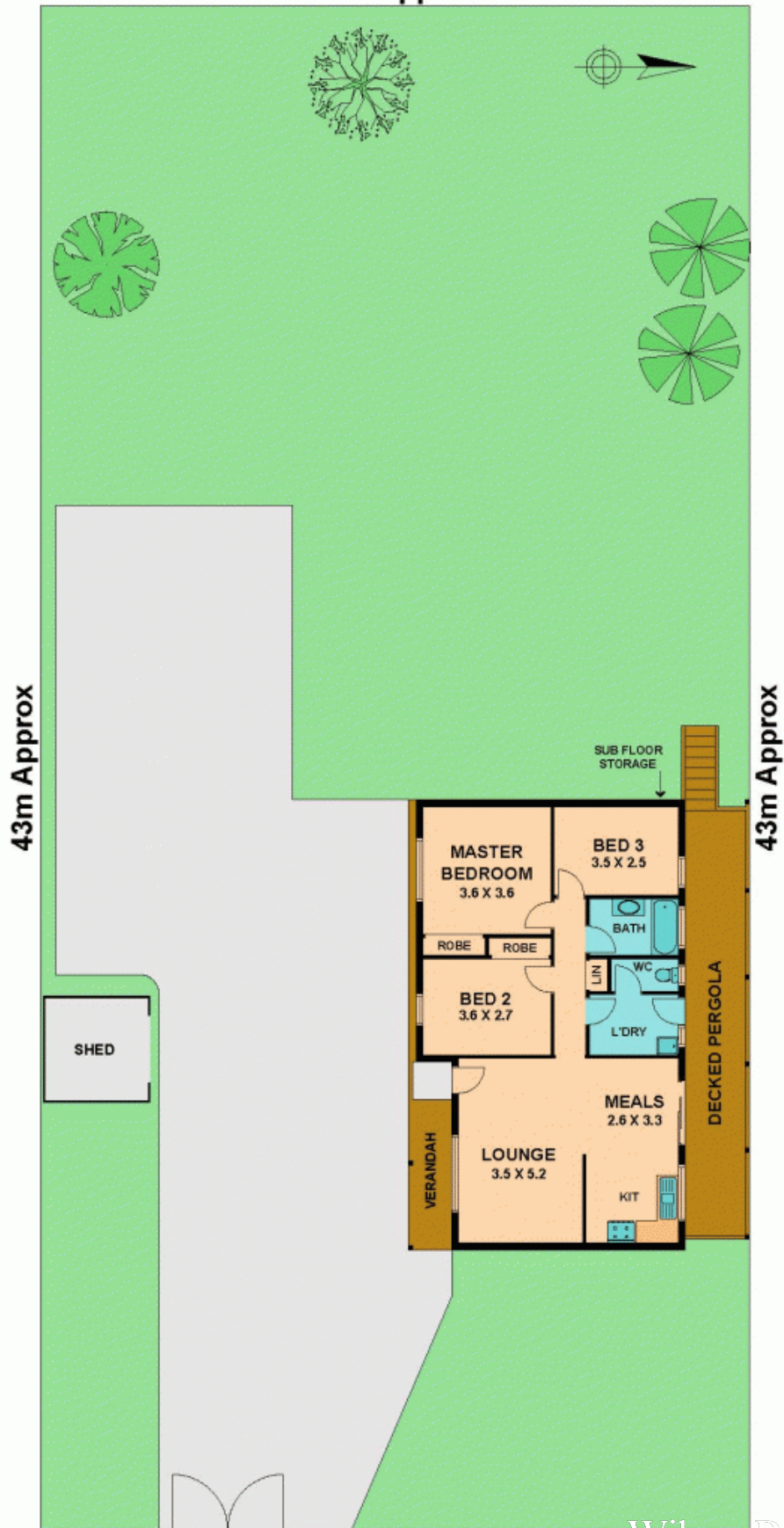
This is a perfect first home or investment property, so come prepared to bid at Auction on the 2nd October 2010 at 2pm.

See you there! Open for Inspection every Saturday in September, 11-11.45am and 1.15pm-2pm on Saturday, 2nd October (Auction Day).

Bianca Thomas

0425 733 651

20m Approx



43m Approx

43m Approx

20 LINTON STREET

20m Approx
CLONBINANE, VIC

Wilson Partners