



61 DONALDSON DRIVE BROADFORD, VIC



3



2



2

PLUS PLUS PLUS

INSPECT SOON - EXCELLENT VALUE

You truly don't find new homes on this size block very often any more. And you definitely don't find this price range for this type of property within an hour of Melbourne very often any more.

So - Have you been looking for bigger than the standard block of land!!

61 Donaldson is a smidgen under 1000m2 - huge!

And it backs on to a reserve with walking track, then farmland - big bonus.

Plus, the design of the home allows for 3 living areas, 3 bedrooms and a study which could easily be a 4th bedroom.

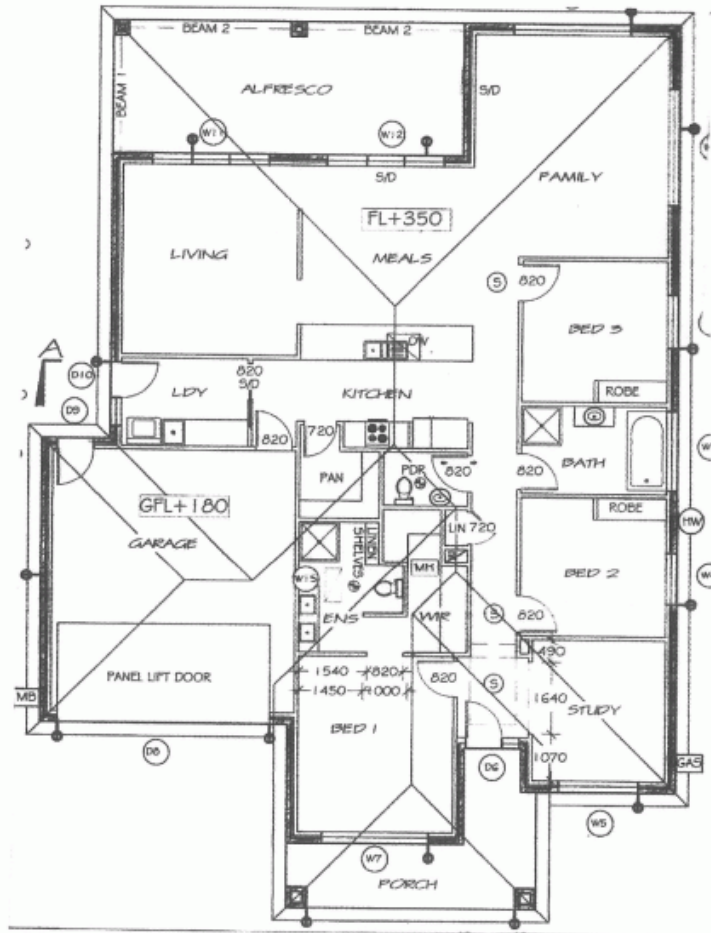
This home is located in a quiet spot in the Mt Piper Estate, within walking distance to town, station and schools.

I recommend that you inspect this excellent property soon.

Call Julia Jones on 0408 997 456 to arrange.

Bianca Thomas

0425 733 651



Wilson Partners

61 DONALDSON DRIVE

BROADFORD, VIC