



530A BROADFORD-KILMORE ROAD KILMORE,
VIC



5



2



2

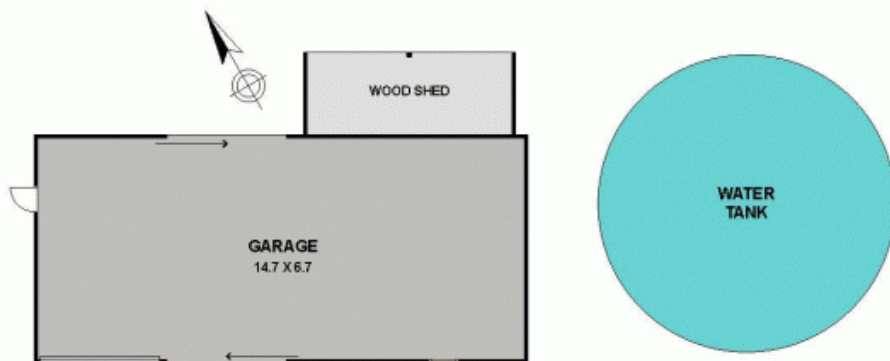
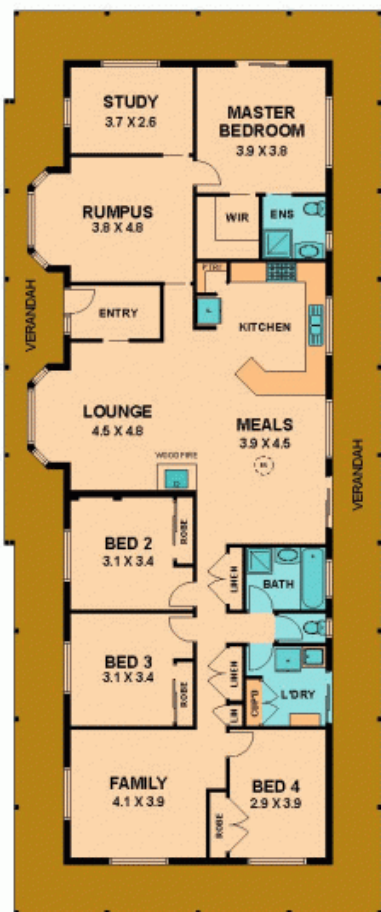
POSITION PERFECT

DO NOT miss out on this very rare chance indeed to own a fantastic family home on 12 acres close to both Broadford and Kilmore. Could you possibly get a better location! The home has 4 good sized bedrooms, plus a study / 5th bedroom, 3 living areas to spread out in and views from every room in the house. Complete with quality floor coverings, drapes and fittings. Solid fuel heating and evaporative cooling.

Outside we have a large farm shed with concrete floor and power. Enough room to park the cars and have a workshop. 4 goat paddocks and a dam. All this and more. If you snooze you will lose. Act now and call Susie Marks on 0438 843 863.

Bianca Thomas

0425 733 651



530A BROADFORD-KILMORE ROAD, KILMORE, VIC

Wilson Partners