



385 KOPYBOYN ROAD WHITEHEADS CREEK  
SEYMOUR, VIC



6



3



2

## Ellerslie Park

An easy 8 kilometre drive from Seymour CBD will bring you to this distinctive 40 acre property with an emphasis on versatility.

Ellerslie Park offers the astute buyer fantastic opportunities to show initiative and reap the benefits. Not only can you and your family enjoy a country lifestyle in peaceful and private surroundings, you will also have the space and comfort to allow your extended family or guests to share the experience.

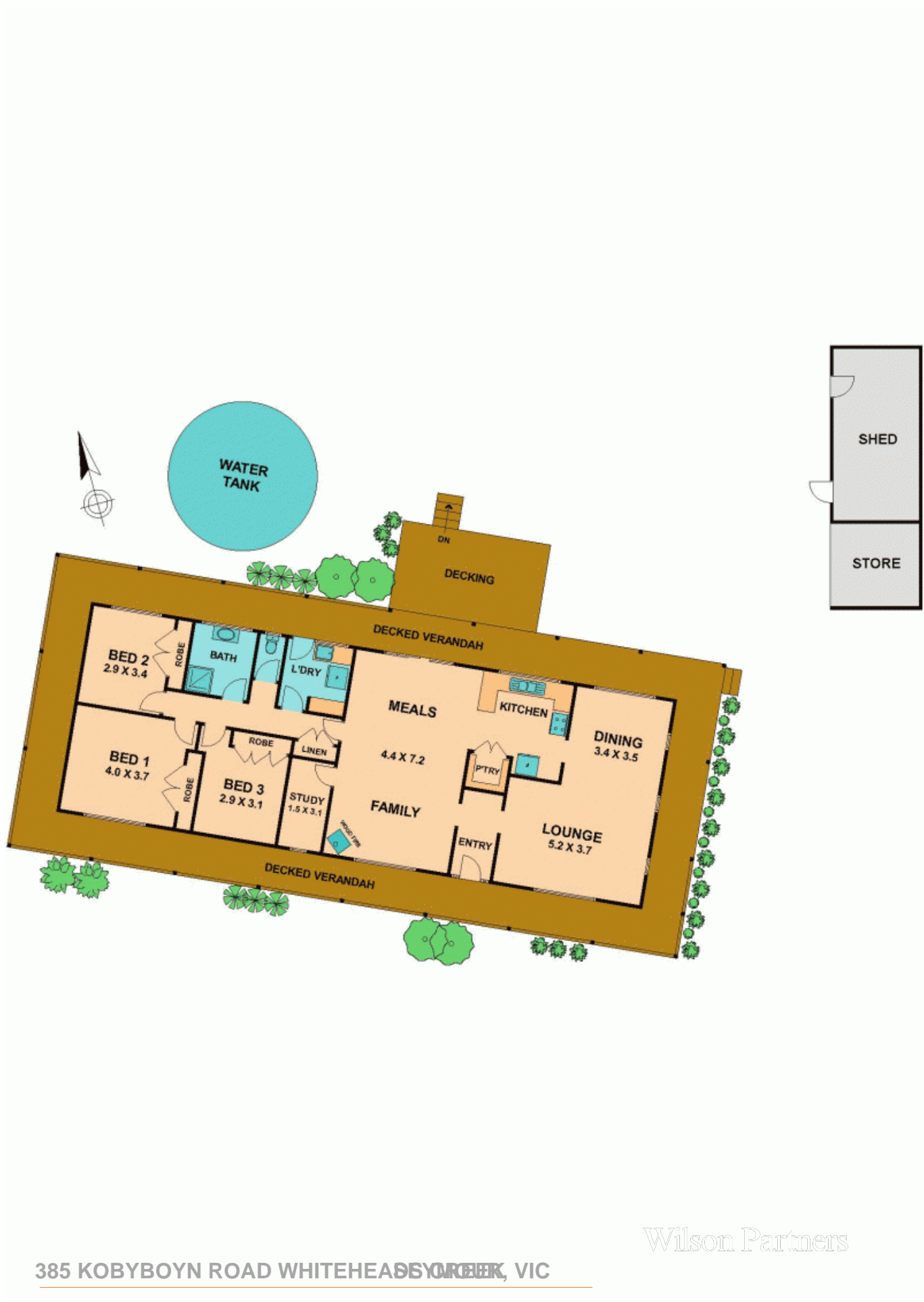
Several well-fenced paddocks with good shade trees, 1 excellent dam and assorted farm shedding and shelters could make stock agistment a viable option.

Of course you will need a comfortable, family-friendly home, and here you will have NOT ONE BUT TWO HOMES.

One has 3 bedrooms complete with built-in robes and ensuite to the master, gorgeous polished floorboards, leadlight feature windows, ornate cornices and ceiling roses, dado panelling and appealing kitchen plus a huge undercover entertainment deck and wraparound verandah

**Bianca Thomas**

0425 733 651



Wilson Partners

385 KOBAYBOYN ROAD WHITEHEADS VIC