



5 ROSIE DRIVE BROADFORD, VIC



5



2



2

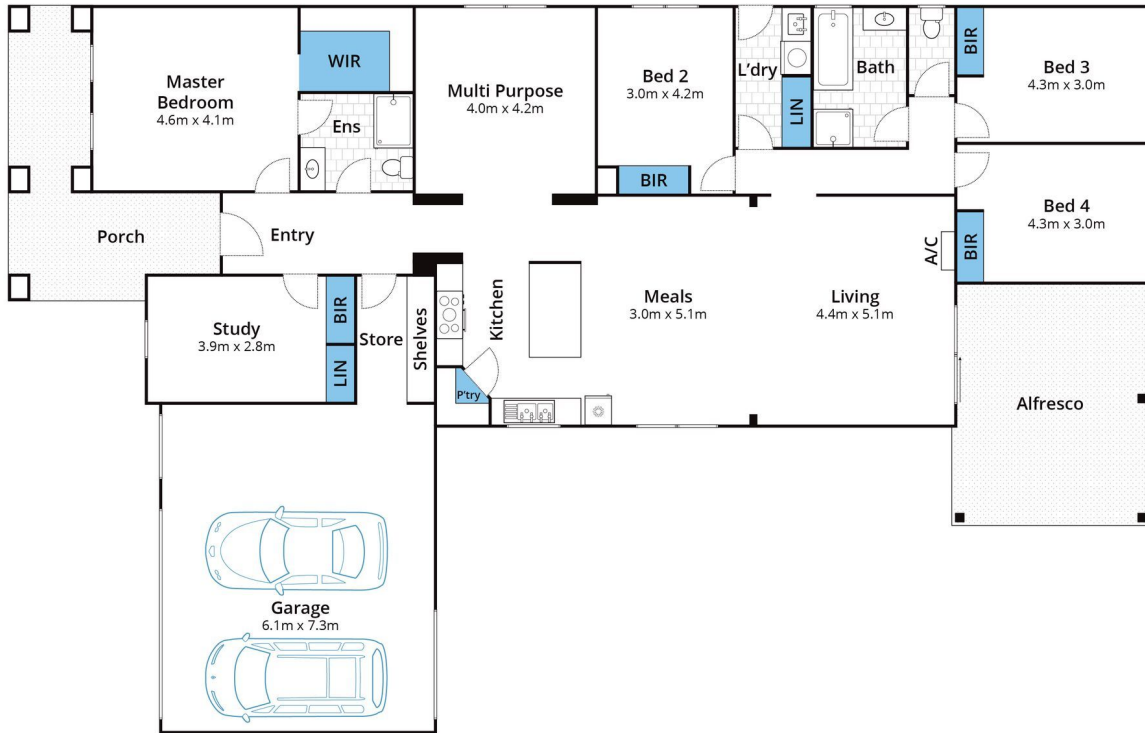
## BROADFORD HOUSE FOR SALE

### Fabulous family home

This stunning family home is a credit to the quality builders and the thoughtfulness of its current owners, located in a secluded dead end street. Sitting on a generous block that even with the huge 5 bedroom house, it still has room for the swing set, trampoline and cubby! There really is no shortage of room inside or out with this fantastic property. The front yard is inviting and really does provide real street appeal that welcomes you to your new home.

Outside is perfect for the kids and the entertainers with a large, secure, levelled open backyard with established lawns and year-round entertaining with a large alfresco area complete with downlights and concrete floor

The location is absolute prime, being in a quiet, established estate with quality houses around and almost no more vacant blocks the area is highly sought after with strong recent sales. Being a 2 minute drive to the train station and all the amenities Broadford has to



Approx. Area 257m<sup>2</sup>

Whilst [bwr.com.au](http://bwr.com.au) has made every attempt to ensure the accuracy of the floor plan contained here, measurements are approximate and no responsibility is taken for any error, omission, or mis-statement. This plan is for illustrative purposes only.

## 5 Rosie Drive, Broadford

Wilson Partners

5 ROSIE DRIVE

BROADFORD, VIC