



104 Sutherland Street KILMORE, VIC



3



2



2

## Perfectly located home on large block

Wilson Partners is proud to present 104 Sutherland Street, Kilmore.

Perfectly located close to local schools and amenities is this spacious three bedroom home on approximately 1035m<sup>2</sup>.

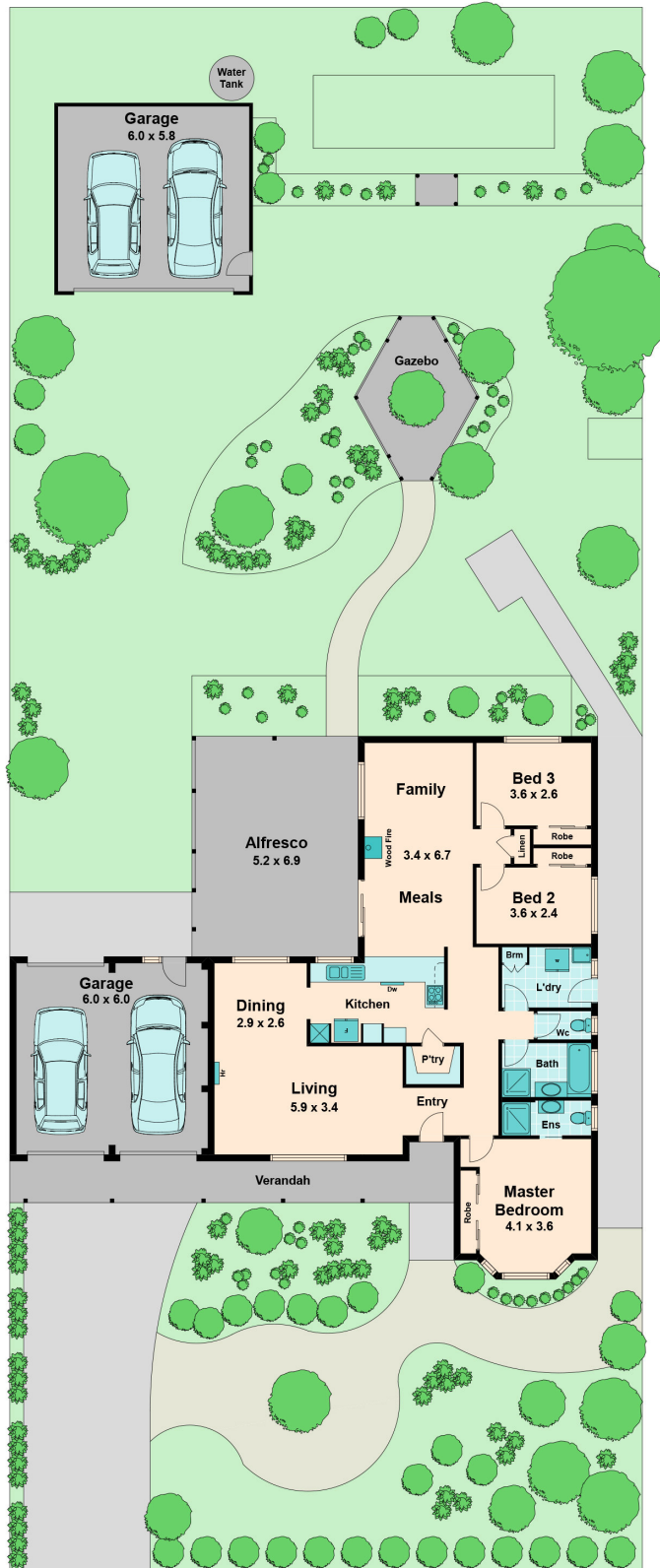
At entry you are greeted with an L shaped formal living/ dining area continuing through to the heart of home consisting of the kitchen overlooking the family room.

The home offers three well sized bedrooms, bedrooms 2 and 3 are serviced by the main bathroom. A master bedroom comprising of ensuite and mirrored robes, all complimented by the bay window which offers a view of the front garden.

Disclaimer: We have obtained all information in this document from sources we believe to be

**Bianca Thomas**

0425 733 651



Wilson Partners

104 Sutherland Street

KILMORE, VIC