



3 Epacris Crescent Broadford, VIC

4 2 2

Modern Living & Comfort

Wilson Partners is proud to present 3 Epacris Crescent, Broadford.

Introducing a stunning brand new build in the heart of Broadford. This perfect family home boasts a modern design with warm timber cabinetry and neutral tones throughout. With 4 bedrooms, 2 bathrooms, a study and a double garage, this property offers ample space for the whole family.

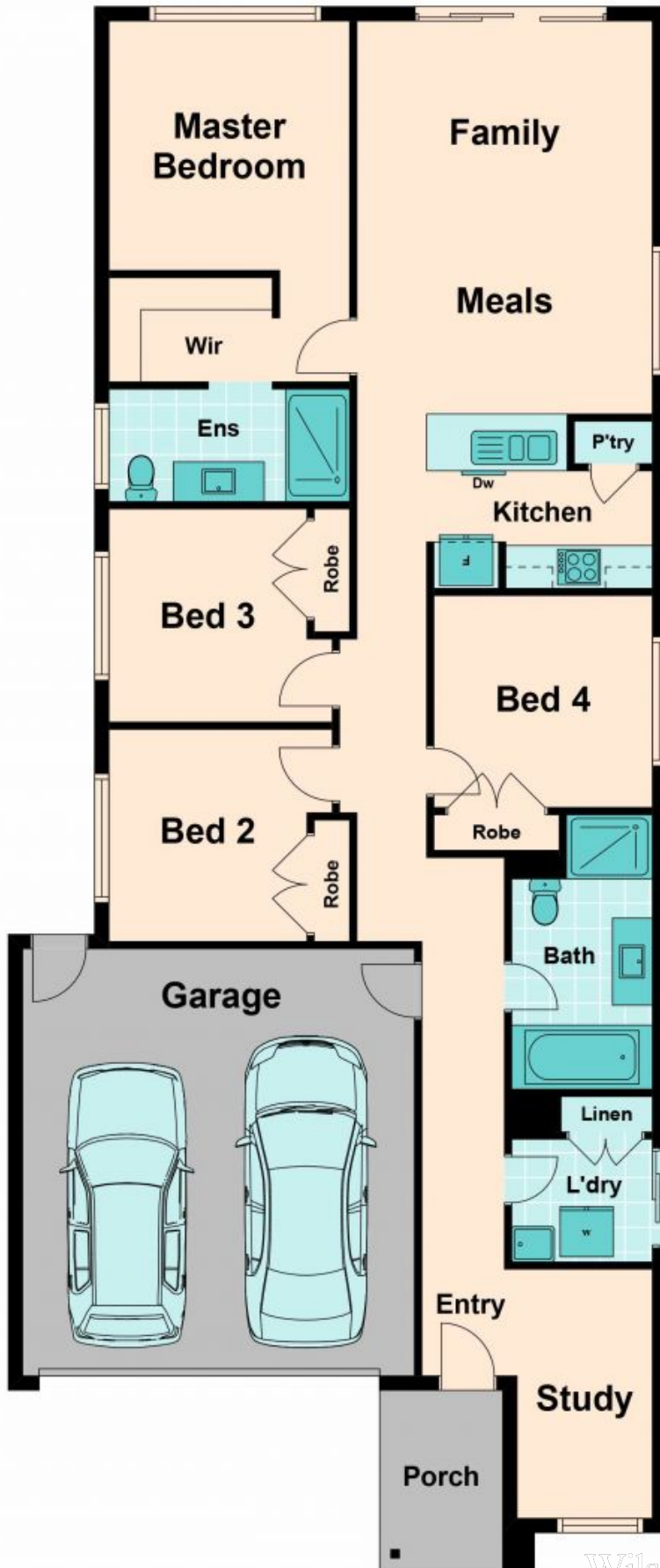
The bedrooms in this property are generously sized, providing comfort and privacy for everyone. The master bedroom features an ensuite, while the remaining bedrooms share a well-appointed bathroom with a separate shower and bath.

This property also offers the convenience of gas ducted heating throughout and a split system air-conditioning in the main living zone, ensuring year-round comfort. The solar hot w

Inspect: Saturday, 7th September 2024 1:15 - 1:45

Georgina Smith

0490 663 721



Wilson Partners